



# SSHRC Canada Graduate Scholarships Program (CGS)

Social Sciences and Humanities Research Council – SSHRC



# Agenda

- Overview of Funding
- Eligibility
- Application Process
- Evaluation Criteria
- Tips & Tricks
- Competition Timeline
- Complete Application Package
- Application Resources



# Doctoral Awards

One application, one national competition, two awards

## **Value and duration:**

- SSHRC Doctoral Fellowships: \$20,000/year for up to 48 months
- Canada Graduate Scholarships Doctoral Scholarships (CGS-D): \$35,000/year for 36 months
- Results announced in April 2022

## **SSHRC Doctoral & CGS-D**

Students apply in one competition – the CGS-D will be offered to the top-ranked applicants, and the next tier of meritorious applicants will be offered SSHRC DF.

# Eligibility

## SSHRC Doctoral Fellowships

- Be a Canadian citizen or Permanent resident
- Not have completed **more than 48 months** of full-time study in their doctoral program by **Dec.31 of the year of application**
- Not have already received a doctoral-level scholarship or fellowship from the Tri-Agency (CIHR, NSERC, or SSHRC)
- Submit only one doctoral award application in a given academic year (*Vanier CGS program do not count towards this limit*)

## CGS-D

- Be a Canadian citizen or Permanent resident
- Not have completed **more than 24 months** of full-time study in their doctoral program by **Dec.31 of the year of application**

# Eligibility

The months of study completed are calculated starting from the date on which an applicant is officially registered in the doctoral program; this also applies to applicants:

- Registered in a Master's program -> transferred to a doctoral program (fast-track); or
- Applicant who's a direct transfer from an undergraduate program must be enrolled in their doctoral program at the time of application. These applicants may be eligible to apply to the CGS M program for their first year of doctoral funding.

\*Part-time study is counted as half time (i.e. two terms of part-time study is counted as one term of full-time study)

# Application Process





# Evaluation Criteria

## Research ability and potential – 50%

- Quality of research proposal
- Relevant training, such as academic, lived experience and traditional teachings
- Research experience and achievements
- Quality of contributions to the field of research (i.e. publications, presentations, posters)

## Relevant experience and achievements obtained within and beyond academia – 50%

- Scholarships, awards, distinctions (amount, duration, prestige)
- Academic records (transcripts)
- Professional, academic, and extracurricular activities such as collaborations, community outreach, engagement in conferences or institutional organizations

# Tips & Tricks

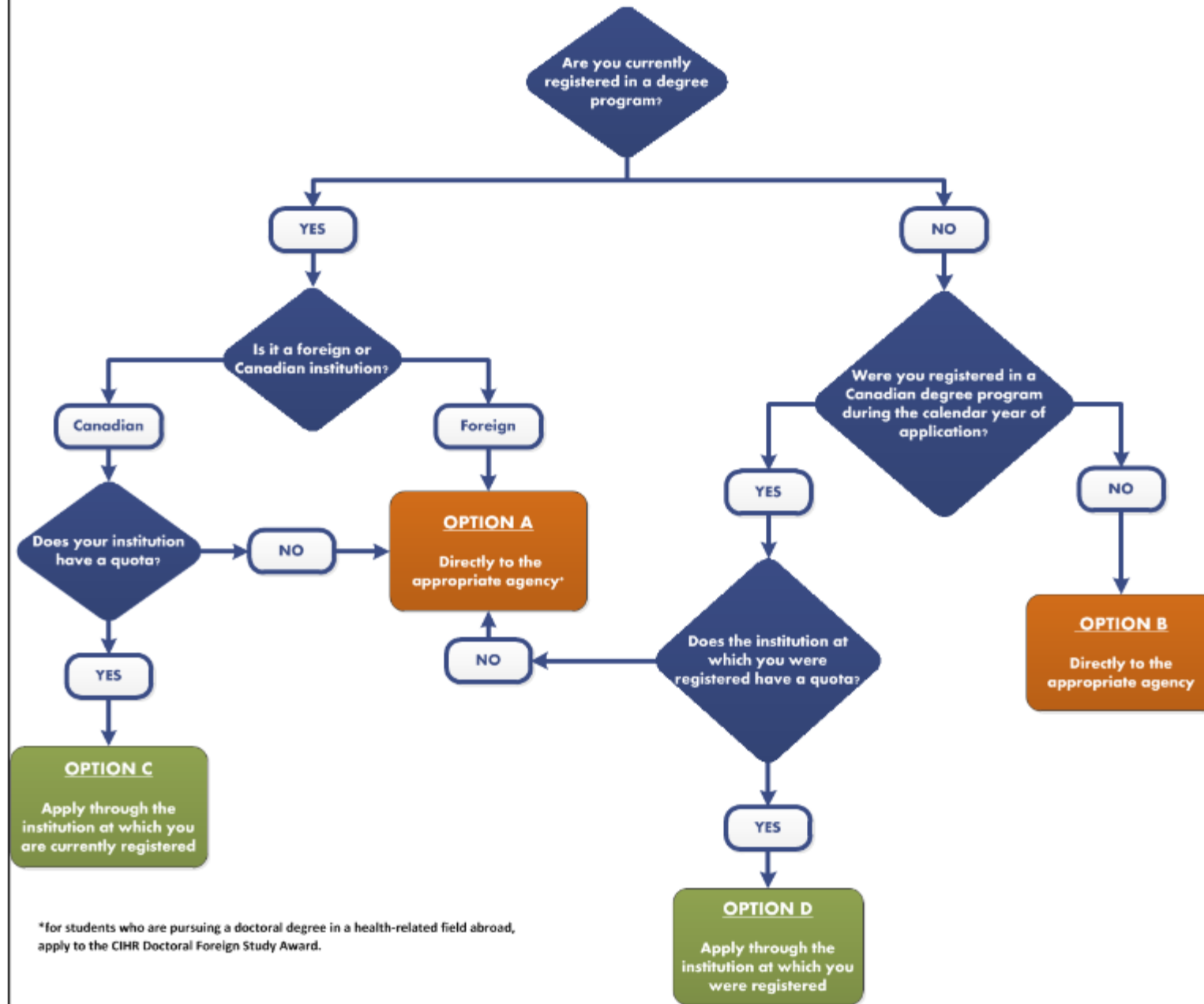
- ▶ Order official transcripts early – you will need to scan and upload into 1 PDF
  - ▶ SFU Official Transcripts – order online and put attention to Stephanie Santoso. Our office will scan and email you the original copy.
  - ▶ If you have done exchange program, make sure to include the official transcripts from the institution as well.
  - ▶ Make sure to upload the attachments according to SSHRC's specifications, otherwise the system will give an error message or it would not upload it. If you need help with combining the transcripts, our office can help.
  - ▶ You should include up-to-date official transcripts of all undergraduate and graduate studies in the application. Retain the paper copy of any uploaded transcripts, as you may be asked to provide it for verification purposes.
  - ▶ **\*\*Up-to-date official transcripts are defined as transcripts issued by the Registrar's Office and dated or issued in the fall session of the year of application (if currently registered) or after the last term completed (if not currently registered).\*\***
  - ▶ If you do not provide transcripts for all programs of study listed in the SSHRC CV, the selection committee(s) will have less information on which to base their assessment, which may put your application at a disadvantage.



# Tips & Tricks

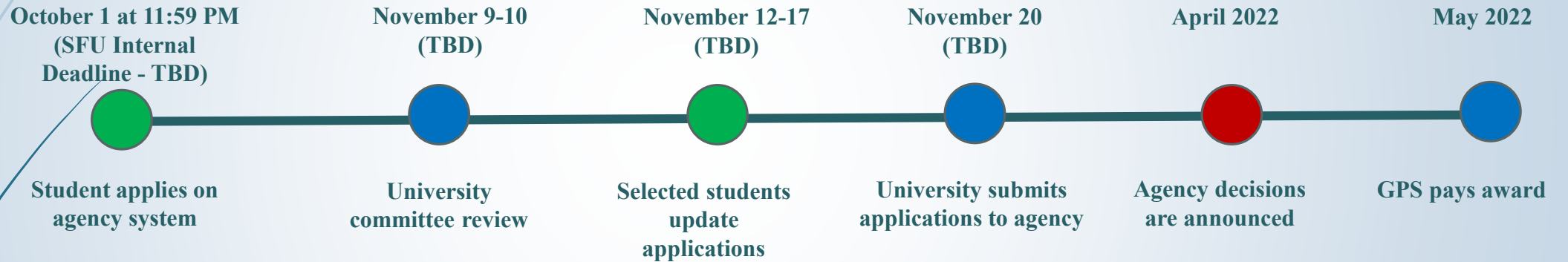
- ▶ Referees:
  - ▶ Provide concrete examples of your experiences that aligns with SSHRC's evaluation criteria
  - ▶ Referees can be beyond academic community
  - ▶ The system times out after 20 minutes – we recommend referees to use Word doc to copy and paste
  - ▶ Advise referees to preview their letter before submitting it to make sure it fits into the page and nothing gets cut off
  - ▶ Advise referees to use inclusive language (e.g. “the applicant” or “they” instead of “he/she”) as part of the SSHRC instructions for referees under “Limiting unconscious bias”.
- ▶ Applicants will not be able to submit application without both letters
- ▶ Verify all pages on the On-line system
- ▶ In the SSHRC online system, click on “Instructions” inside your application for detailed information on how to complete your application.
  - ▶ Research Contributions, Relevant Experience and Activities – the Instructions page give a list of examples
- ▶ Work ahead of time and submit early if you can

## Where should I submit my application?



\*for students who are pursuing a doctoral degree in a health-related field abroad, apply to the CIHR Doctoral Foreign Study Award.

# Competition Timeline



# Complete Application Package

- SSHRC CV
- SSHRC Doctoral Award Application
- Application Profile
- Program Information
- Areas of Study
- Research Proposal – upload (max 2 pages)
- Bibliography/Citations – upload (max 5 pages)
- Transcripts – upload – needs to match your CV under “academic background”
- Allowable Inclusion – upload (max 1 page only if applicable – special circumstances)
- Research Contributions, Relevant Experience and Activities – upload (max 2 pages)
- Justification pages - upload (only if applicable)
- Referees – invitation to complete letter of appraisal

# Application Resources

## **SSHRC Doctoral Fellowships**

<http://www.sshrc-crsh.gc.ca/funding-financement/programs-programmes/fellowships/doctoral-doctorat-eng.aspx#a6>

## **CGS-D**

[http://www.nserc-crsng.gc.ca/Students-Etudiants/PG-CS/CGSD-BESCD\\_eng.asp](http://www.nserc-crsng.gc.ca/Students-Etudiants/PG-CS/CGSD-BESCD_eng.asp)

## **SSHRC On-line System:**

<https://webapps.nserc.ca/SSHRC/faces/logon.jsp>

## **SFU Tri-Agency Doctoral Website:**

<https://www.sfu.ca/gradstudies/awards-funding/external-gov-funded.html>

## **Application Instructions:**

<https://www.sshrc-crsh.gc.ca/funding-financement/instructions/doctoral/doctoral-eng.aspx#prop>

## **GPS Contact Info:**

Stephanie Santoso at [gpsaward@sfu.ca](mailto:gpsaward@sfu.ca)